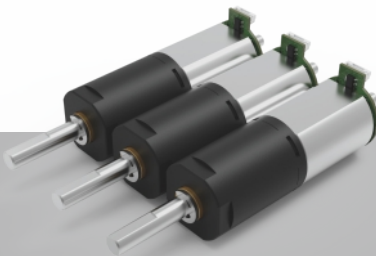


12
mm

Plastic
P
塑料



ZWPD012012

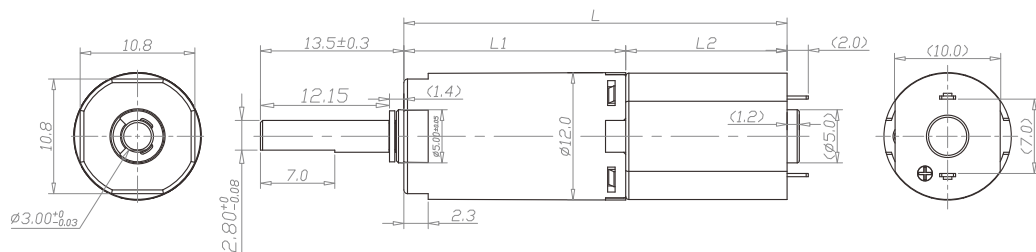
齿轮箱规格 Gearbox Specifications

外径	Outer diameter	12mm	轴承	Bearing	含油轴承 Porous bearing
材质	Material	塑料 Plastic	轴向窜动	Axial endplay	≤0.3mm
旋转方向	Direction of rotation	cw & ccw	输出轴径向负载	Radial loading on output shaft	≤5N
齿轮箱回程差	Gear backlash	≤3°	工作温度	Operating temperature range	-20 ~ +85°C

齿轮级数 Gearbox Stages

	1	2	3	4	
减速比	Reduction ratio	4 / 6	16 / 24 / 36	64 / 96 / 144 / 216	256 / 384 / 576 / 864 / 1296
最大容许扭力 (gf.cm)	Max rated torque of gearbox (gf.cm)	200	400	600	850
瞬间容许力矩 (gf.cm)	Instant torque of gearbox (gf.cm)	500	800	1200	1700
齿轮箱效率 (%)	Gearbox efficiency (%)	85	73	65	58
长度 (mm)	Gearbox length L1 (mm)	9.5	13.3	17.1	20.9

技术插图 | Technical Drawing



马达规格参数 Motor Specifications

马达(可选择) Motor type (optional)	直流有刷电机、直流无刷电机、空心杯电机、步进电机 Brushed DC motor, Brushless DC motor, Coreless motor, Stepper motor	输入速度 Input speed	≤3000rpm
电压(可选择) Voltage (optional)	3-24V	电流 Current	250mA max

型号 Model	Rated Speed 额定转速	Max Speed 最高转速	Max Rated Torque 额定容许力矩	Max Instant Torque 瞬间容许力矩	Reduction Ratio 减速比	Gearbox Length 减速箱长 L1	Overall Length 总长 L
	rpm	rpm	gf.cm	gf.cm		mm	mm
ZWPD012012-4	1875	7500	200	500	4	9.5	24.5
ZWPD012012-6	1250	5000	200	500	6		
ZWPD012012-16	469	1875	400	800	16	13.3	28.3
ZWPD012012-24	313	1250	400	800	24		
ZWPD012012-36	208	833	400	800	36		
ZWPD012012-64	117	469	600	1200	64	17.1	32.1
ZWPD012012-96	78	313	600	1200	96		
ZWPD012012-144	52	208	600	1200	144		
ZWPD012012-216	35	139	600	1200	216		
ZWPD012012-256	29	117	850	1700	256	20.9	35.9
ZWPD012012-384	20	78	850	1700	384		
ZWPD012012-576	13	52	850	1700	576		
ZWPD012012-864	9	35	850	1700	864		
ZWPD012012-1296	6	23	850	1700	1296		

注：可根据客户要求定制 Please contact us for customized products