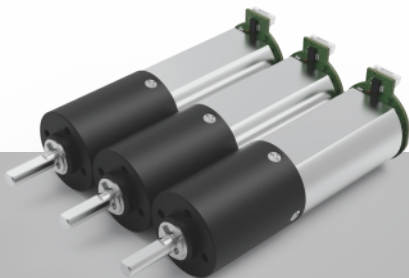


16
mm

Plastic
P
塑料



ZWBPD016016

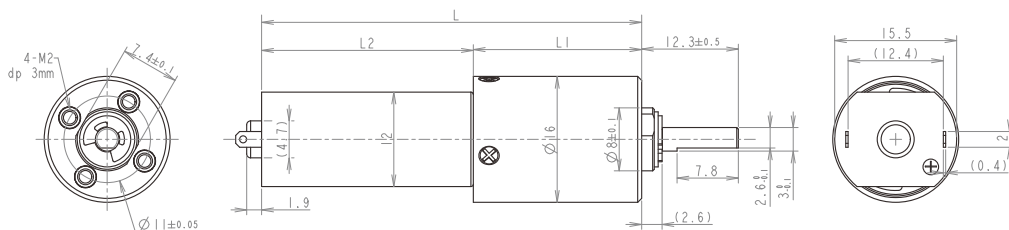
齿轮箱规格 Gearbox Specifications

外径	Outer diameter	16mm	轴承	Bearing	含油轴承	Porous bearing	滚动轴承	Rolling bearing
材质	Material	塑料 Plastic	轴向窜动	Axial endplay	≤0.3mm	≤0.3mm	≤0.3mm	≤0.3mm
旋转方向	Direction of rotation	cw & ccw	输出轴径向负载	Radial loading on output shaft	≤10N	≤10N	≤20N	≤20N
齿轮箱回程差	Gear backlash	≤3°	工作温度	Operating temperature range	-20 ~ +85°C			

齿轮级数 Gearbox Stages

		1	2	3	4
减速比	Reduction ratio	4 / 6	16 / 24 / 36	64 / 96 / 144 / 216	256 / 384 / 576 / 864 / 1296
最大容许扭力 (gf.cm)	Max rated torque of gearbox (gf.cm)	3000	3000	3000	3000
瞬间容许力矩 (gf.cm)	Instant torque of gearbox (gf.cm)	6000	6000	6000	6000
齿轮箱效率 (%)	Gearbox efficiency (%)	85	73	65	58
长度 (mm)	Gearbox length L1 (mm)	11.5	14.8	18.1	21.4

技术插图 | Technical Drawing



马达规格参数 Motor Specifications

马达(可选择)	Motor type (optional)	直流有刷电机、直流无刷电机、空心杯电机、步进电机 Brushed DC motor, Brushless DC motor, Coreless motor, Stepper motor	输入速度	Input speed	≤15000rpm
电压(可选择)	Voltage (optional)	3-24V	电流	Current	300mA max

参考数据(马达定义值): 6v 8000rpm 下表根据马达定义值测试, 数据只作为参考值

型号 Model	Rated Speed 额定转速	Max Speed 最高转速	Max Rated Torque 额定容许力矩	Max Instant Torque 瞬间容许力矩	Reduction Ratio 减速比	Gearbox Length 减速箱长 L1	Overall Length 总长 L
	rpm	rpm	gf.cm	gf.cm		mm	mm
ZWBPD016016-4	1875	7500	3000	6000	4	11.5	38.4
ZWBPD016016-6	1250	5000	3000	6000	6		
ZWBPD016016-16	469	1875	3000	6000	16	14.8	41.7
ZWBPD016016-24	313	1250	3000	6000	24		
ZWBPD016016-36	208	833	3000	6000	36		
ZWBPD016016-64	117	469	3000	6000	64	18.1	45.0
ZWBPD016016-96	78	313	3000	6000	96		
ZWBPD016016-144	52	208	3000	6000	144		
ZWBPD016016-216	35	139	3000	6000	216		
ZWBPD016016-256	29	117	3000	6000	256	21.4	48.3
ZWBPD016016-384	20	78	3000	6000	384		
ZWBPD016016-576	13	52	3000	6000	576		
ZWBPD016016-864	9	35	3000	6000	864		
ZWBPD016016-1296	6	23	3000	6000	1296		

注: 可根据客户要求定制 Please contact us for customized products